

Optimize Your Operations with ProcessVue Alarm Management and Stratus ztcEdge

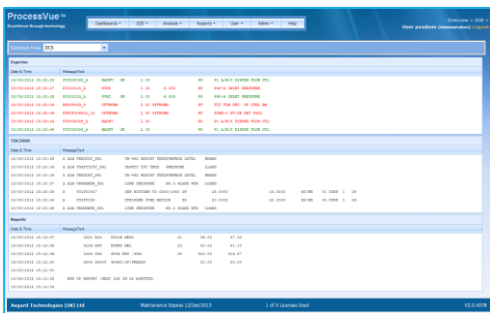
Achieve Unmatched Redundancy and Reliability

Introduction

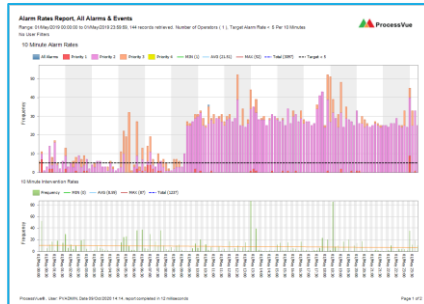
In today's digital age, maintaining operational reliability and efficiency is crucial across industries. By integrating Stratus ztcEdge with ProcessVue Alarm Management, organizations can achieve enhanced reliability, operational efficiency, and compliance with industry standards.

ProcessVue Alarm Management Suite: Optimizing Alarm Systems

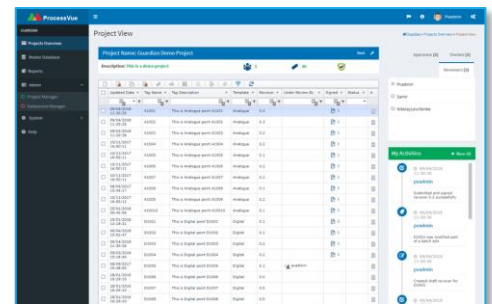
ProcessVue Alarm Management Suite is designed to streamline alarm monitoring, management, and compliance across diverse industrial environments. It offers several modules tailored to enhance operational efficiency and reduce alarm fatigue.



ProcessVue Sequence: Collects and consolidates alarm data from multiple systems into an SQL database

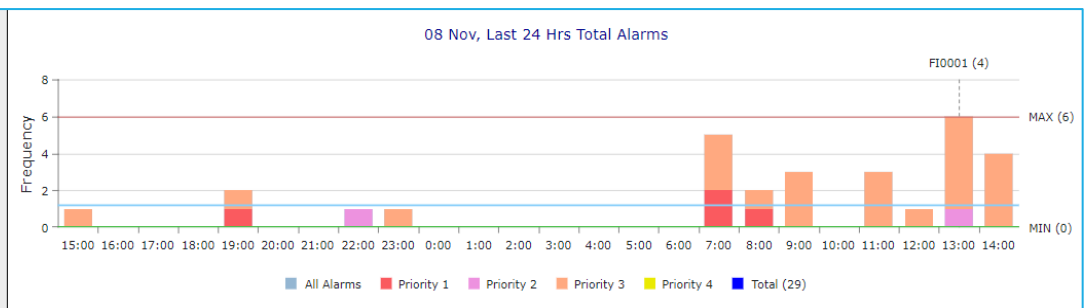


ProcessVue Analyser: Benchmarks alarm systems against industry standards like ISA18.2 and API-1167, to identify and resolve nuisance alarms.



ProcessVue Guardian: Integrates a Master Alarm Database and facilitates Management of Change,

EEMUA API Rev3	Robust
MAX Alarm Rate (A/10M)	5, Target < 20
% Time above MAX Target	0.00 %
AVG Alarm Rate (A/10M)	0, Target < 2
% Time above AVG Target	4.17 %
Active Alarms	2
Stale Alarms	52
Shelved Alarms	2
Last Activity	08/Nov/2023 14:50:59

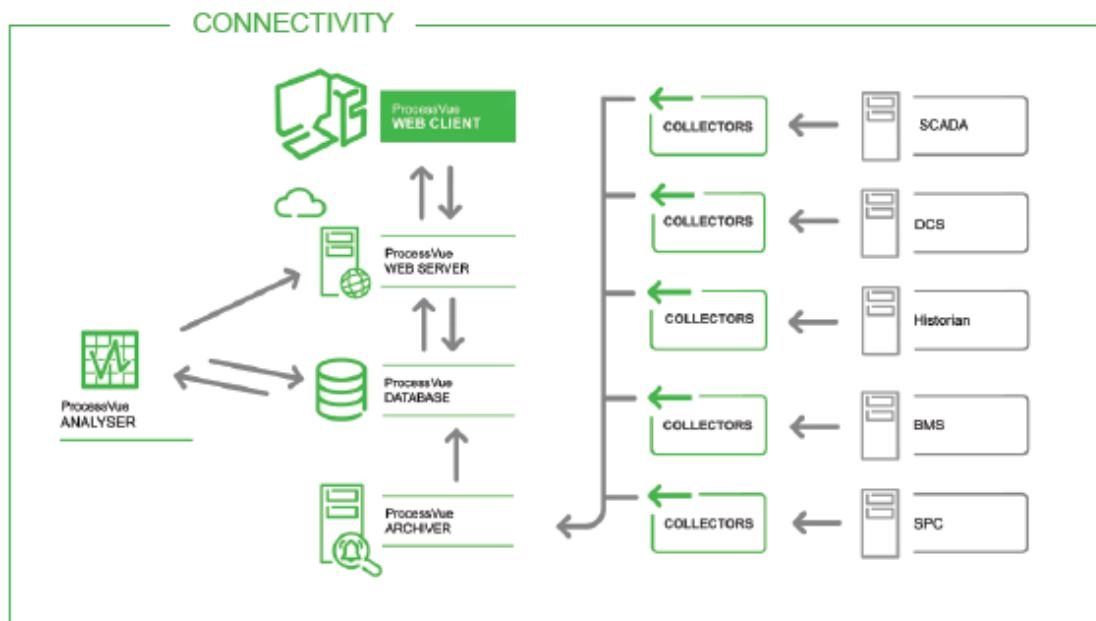


ProcessVue Analyser

Key Features

- ✓ Interactive Frequency Analysis
- ✓ Comprehensive report set with auto scheduler and filtering
- ✓ Realtime dashboard displays with KPI and target information
- ✓ Time in alarm analysis
- ✓ Different Alarm Standards for reporting
- ✓ Customisable Dashboards

ProcessVue Alarm Management Without Limits



Benefits of Integration

Integrating Stratus ztcEdge with ProcessVue Alarm Management offers comprehensive benefits:



Enhanced Reliability: Continuous availability and reliability of critical alarm and event data.



Compliance and Safety: Meet industry standards and regulatory requirements effortlessly.



Operational Efficiency: Reduce downtime and enhance operational efficiency by optimizing alarm management.



Scalable and Future-Proof: Scale your operations with confidence.

Integrating ProcessVue Alarm Management with Stratus ztcEdge ensures continuous availability, minimizing downtime and optimizing efficiency through advanced alarm handling and fault-tolerant edge computing for real-time data management and better decision-making.

Transform Your Operations Today!

Our team of experts is ready to help you integrate ProcessVue Alarm Management with Stratus ztcEdge. Contact us to discover how this combination can enhance your industrial operations.



+603-7832 4288



iam.info@iamgroup.com.my